

Tameside College University and Professional Courses



2023/24




Ofsted

Good
Provider



QAA

UK Quality Assured

Office for
Students

ofs

HNC Mechanical Engineering

CASE STUDY: Suraj Rash



I completed my Level 3 in Mechanical Engineering at Tameside and I really enjoyed it. I loved the teaching and assessment style; so after talking to careers advisors I found that the best option for me was to do the 2 year HE programme and then get a top up degree. The course covered a wide range of topics within engineering which I found extremely

informative. The tutors are really approachable and would help and guide you through the course. The college also had state of the art equipment which really aided in my studies. I now attend the University of Huddersfield to complete a top up course in Mechanical Engineering, which I then will be looking into employment and graduate schemes.

How to apply

UCAS / Direct Applications / Loan Information

.....

You can apply to Tameside College by visiting www.ucas.com and searching for Tameside College in the search engine.

.....

The UCAS deadline for Undergraduate courses is Wednesday 25th January 2023. The reference must be completed before the application can be sent to us. For courses starting in 2023, the application fee is £20.50 for a single choice.

www.tameside.ac.uk
Most of the university courses are payable via either Advanced Learner Loans (Access to HE / Professional Courses) or Higher Education loans – more information can be found at <https://www.gov.uk/student-finance>

If applying via UCAS, please check regularly for updates on your application; alternatively we also accept direct applications via our website:



National Student Survey

The latest published NSS survey (2022) shows an 71% overall satisfaction rate.

The National Student Survey is an independent survey of which the college has no influence upon, the report is compiled and the findings are then publically published for all to see. The full report can be found at: www.officeforstudents.org.uk

The reports show that making Tameside College your number one choice for your university studies is the right thing to do.



National Union for Students (NUS)

The NUS is open to all our university students once you have enrolled, and offers a wide range of services to support you in your studies. You can get involved in campaigns and enrichment activities, and there is also advice on how to work for the NUS, along

with all the discounts available to students. We actively encourage our students to join the NUS on enrolment and full information on how they can support you can be found at:
www.nus.org.uk



Mossley Hartshead Pike



Stamford Park & gardens

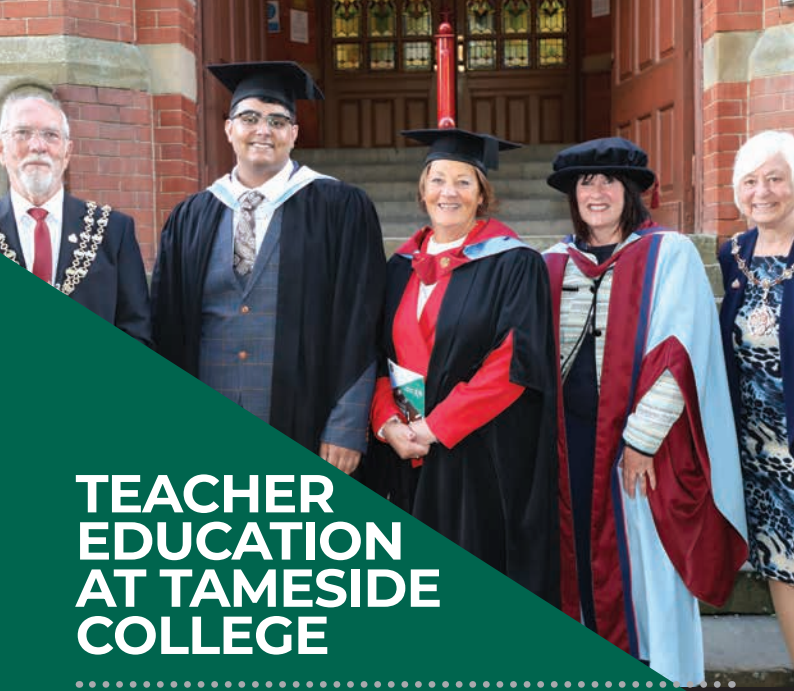


About Tameside

Tameside stretches eastward from Manchester to the Peak District National Park. Its landscape encompasses urban centres, moorland and the spectacular vistas of Werneth Low. The borough was created in 1974 and includes 9 districts. Taking its name from the River Tame, Tameside was at the heart of the Industrial Revolution and was once a centre for engineering, cotton and coal mining. Top attractions within Tameside include Portland Basin Museum, Werneth Low Country Park, Park Bridge Heritage Centre and Ashton Market.

Only 25 minutes away in the car or on the tram is Manchester City Centre, which has been voted the UK's best city to live in*, not surprising with its iconic culture of music, food and drink – and home to the most famous football teams in the world.

*The Economist's 'Global Liveability Index' for 2018



TEACHER EDUCATION AT TAMESIDE COLLEGE

Our Initial Teacher Education department supports/creates the future teachers of academic and vocational subject areas for those within industry who would like to pass on their knowledge to further support the development of the new workforce.

DID YOU KNOW...

Greater Manchester's main growth sectors, important in terms of supporting a modern, knowledge-driven economy and accelerating growth, are Manufacturing, Financial & Professional Services (including Business Services), Digital and Creative Industries, and Health Innovation; with the biggest education level gap being at Level 4 and 5 (HNC & HND)*

*Greater Manchester Work & Skills Strategy and Priorities 2016-2019

SECURE YOUR FUTURE



**Tameside
College**

Enrichment opportunities

Here at Tameside College we believe that learning should not be exclusive to the classroom, if we can take our teaching and learning outside of the classroom we will. Trips and visits that are linked to learning objectives are encouraged across all curriculum areas.

Each curriculum area is open to ideas and discussions regarding trips and visits students feel will enhance their experience with us and their learning. If you have an idea, why not share these with us and we can then discuss the logistics of this. Trips and visits are additional to course costs, and therefore need consideration when planning.

One of the trips will include a trip to Berlin, where learners will be educated about the history of Computer Science. They will study various themes such as understanding algorithms, seeing real computer systems and how software is developed in businesses. Visits will include Computerspielemuseum (Video Game Museum), Deutsches Technikmuseum (German Museum of Technology) and Berlin TV Tower.

Deutsches Technikmuseum



Apply online: www.tameside.ac.uk

Travel and Transport

Located close to Ashton Town Centre's transport hub, Tameside is accessible from various locations across Manchester.



By Bus: Ashton bus station has 36 services which run frequently and are operated by Stagecoach and First Manchester. Many routes have buses running, on average, every 15 minutes to and from the transport hub.

216 – to and from Manchester, passing through Audenshaw and Droylsden

330 – to and from Stockport, passing through Dukinfield and Hyde

409 – to and from Rochdale, passing through Royton and Oldham

Services that travel from Ashton bus station to the Beaufort Road campus are 236 and 237.



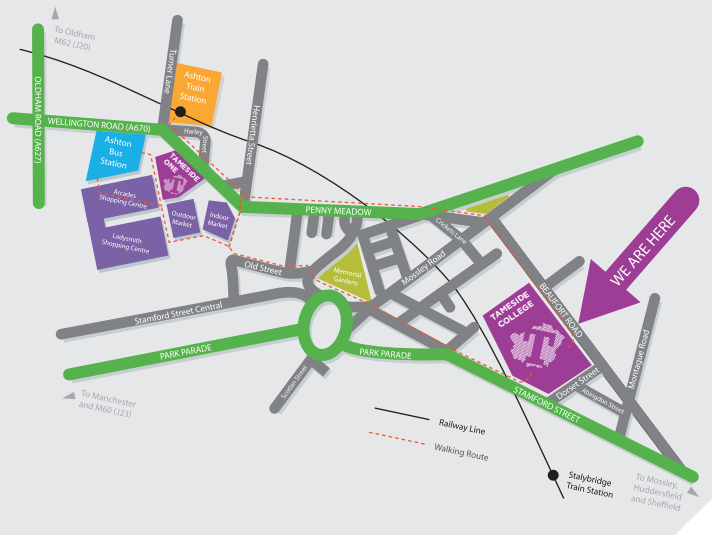
By Train: Trains run every 30 minutes between Ashton-under-Lyne and Manchester Victoria station. This service, operated by Northern Railway, takes around 10 minutes and is a direct line.



By Tram: Trams run every 12 minutes from Manchester to Ashton. The direct line from MediaCity, passing through Piccadilly, takes around 40 minutes.



Cycling: There are cycle spaces at the Beaufort Road campus. Ashton town centre also has a new cycle hub which can accommodate over 40 bicycles. The hub is operated by secure automatic doors and CCTV. Use of the cycle hub costs £10 per year.





Kathryn Jenkins
Level 5 - Diploma in Education
and Training



Morgan Brown
Level 5 - Certificate Human Resource
Management (CIPD)



Joshua Selby
Postgraduate Certificate of Education
(Huddersfield)



Rachel Balshaw
HND in Sport and Exercise Science



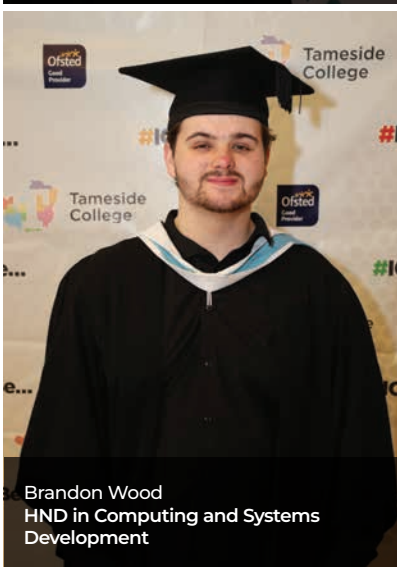
Adam Kershaw
HNC in Electrical/Electronic Engineering



Rubana Mazhari
Foundation Degree in Teaching
Assistance (University of Chester)



Mohammed Daghnoosh
Level 5 - Diploma in Education and Training



Brandon Wood
HND in Computing and Systems
Development

Tameside College's integrated approach to prioritising the employability of its students is a distinctive feature of its HE provision. The College's commitment to employer engagement is articulated in its mission and demonstrated in practice.

Quality Assurance Agency
for Higher Education Institutions



UK Quality Assured

Foundation Degree in Teaching Assistants

.....

CASE STUDY: Paula Bottomley

.....



I decided to attend Tameside College because of its prime location and easy access from surrounding areas. The college offers excellent resources to aid my learning as well as my wellbeing. I attended an Open Evening where I met with HE tutors, they listened as I explained where I wanted to be with my career and then they advised which path would get me to where I wanted to be. My Foundation Degree tutor was absolutely amazing and

she offered me help and support throughout the course. Her guidance and encouragement helped me to gain in confidence both academically and personally. I found the course relevant and fascinating, as I have been able to apply my skills and knowledge to my workplace. Now that I have completed the above course, I have embarked on the BA Hons Children and Young People's Education and Development programme with Tameside College.

Our Facilities

Gym and Fitness Suite

Open 5 days a week, the Gym and Fitness Suite is a bright spacious room with the latest “Life Fitness” and “Hammer Strength” equipment. All our students have free access to this space and with its very own studio; it’s a great environment for students to work out in.

Advanced Technologies Centre (ATC)

The ATC is a five story, iconic building which houses STEM subjects with cutting edge learning facilities, classrooms and workshops. This building was designed and built with employers and careers in mind, allowing our students to train to industry standard in engineering.

Learning Hub

Based on the 2nd floor of our ATC building, the Learning Hub combines traditional learning material such as books, journals, DVDs with our on-line resources.

Tameside One

This town centre campus accommodates courses and training related to the service sector industries. Tameside One, a joint centre with Tameside Council, is part of the bigger ‘Vision Tameside’ project.

Tameside One also offers on site facilities such as The Salon, The Restaurant and The Bakery - all of which are available to our students

Our Courses

Entry requirements

We accept a wide range of qualifications and prospective students should refer to course listings on our website for the most up-to-date entry requirements.

Please visit:
www.tameside.ac.uk
for more information

Course information

This guide was produced in January 2023, for the September 2023 intake and has been printed in advance of courses starting. For this reason, the course information may be subject to change prior to you applying for a place on any of our university courses.

Students are reminded that they are accountable for checking all up-to-date information on the Tameside College website.



APPLY NOW FOR SEPTEMBER 2023

.....
Full Time Undergraduate
www.ucas.com and search for
Tameside College

.....
Direct applications also welcome via
www.tameside.ac.uk

TAMESIDE COLLEGE

UNDERGRADUATE COURSES

*Provision under review;
subject to validation – full degree

- HTQ Computing (Cyber Security)
- HND Computing
- Foundation Degree in Teaching Assistance / Early Years*
- BA (Hons) in Education (Supporting Teaching and Learning)
- Teacher Education (Cert Ed, PGCE)
- HNC / HND in Engineering (Electrical & Mechanical)
- HNC in International Travel and Tourism

DID YOU KNOW

Tameside College also offer a number of professional courses such as Access toHE, CIPD, Counselling and AAT. Visit

www.tameside.ac.uk
for more information



**Tameside
College**



Dukinfield Town Hall
Graduation venue

Our University Partner

University of
Huddersfield
Inspiring global professionals

The University of Huddersfield is an award winning university, gaining increasing recognition for the quality of teaching and research, student satisfaction and focus on work experience, innovation and enterprise.

Apply online: www.tameside.ac.uk

23



www.tameside.ac.uk
0161 908 6789

Facebook: /tamesidecollege

Twitter: @TamesideCollege

Instagram: tamesidecollege



TAMESIDE COLLEGE

Beaufort Road
Ashton-under-Lyne
OL6 6NX

TAMESIDE ONE

Wellington Road
Ashton-under-Lyne
OL6 6BL